

## Accessories

**NEW**



### Model MI08

The instruments are supplied complete with a manually operated cell changer with a holder for 4 standard rectangular 10mm pathlength cells, a pair of standard 10mm glass cells, RS232 port, dust cover, user manual and mains lead.

**The MI08 sample compartment (155 x 70 x 85mm)** Shown above, enables accessories to be exchanged in a few seconds.

A removable front panel and an access hole in the top of the lid allows maximum flexibility in accessing the flowcell and test-tube holder.

**10mm single cell or flowcell holder, p/n 107-102** Accepts standard rectangular and 4mm semi-micro 10mm pathlength cells, or a 10mm pathlength flowcell with Z=8.5mm

**Test-tube holder, p/n 107-101** This V-type round test-tube holder holds tubes of diameters from 10 to 25mm. The access hole in the sample compartment lid means that any height test-tube can be used. The design of the holder ensures the tube is always central in the light beam. This means that the light beam is not bent and so remains aligned with the detector. This accessory is mounted on the same base-plate as the single cell holder.

**Thermostatted cell holder and front panel, p/n 107-105** Accepts a standard rectangular 10mm pathlength macro or 4mm semi-micro cell. Requires connection to an external circulating water bath.

**Standard Four-position manual cell changer, p/n 107-103.** (Supplied with MI08). Accepts four standard rectangular 10mm pathlength macro or 4mm semi-micro cells. The mechanical locating of the cell positions is very positive, giving excellent reproducibility.

**Long pathlength Four-position manual cell changer, p/n 107-104.** Accepts four standard rectangular 10-50mm pathlength macro cells.

**MI08 PC Application Software, p/n 108-110** For up to 3rd order concentration curves, timescans and wavelength scanning.

**Printer, p/n 330-100** 40 character impact printer including battery charger, spare ribbon and spare paper roll.

### Technical Specifications

Display	4 lines x 20 character LCD	Photometric accuracy	±1.0%A, 0-2A
Wavelength Range	325 to 1000nm	Light source	Tungsten-Halogen lamp
Optics	Single beam	Detector	Photodiode
Monochromator	1200 lines/mm grating	Data output	RS232 for printer or PC
Bandpass	5nm	Short-term noise	<0.001A @ 0.000Abs
Wavelength accuracy	±2nm	Zero drift	less than 0.003A/hr
Wavelength repeatability	±1nm	Weight	7Kg
Stray light	0.1%T @ 340nm	Dimensions (W,D,H)	420 x 330 x 180mm
Photometric ranges	-1 to 2.5A, 0 - 125%T, -9999C to +9999C	Power required	85 - 265V 50/60Hz, 60VA

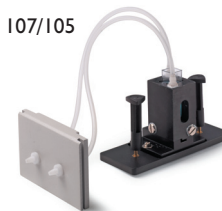
p/n 107/102



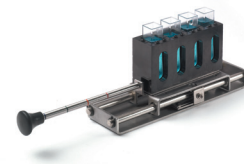
p/n 107/101



p/n 107/105



p/n 107/103



p/n 107/104

